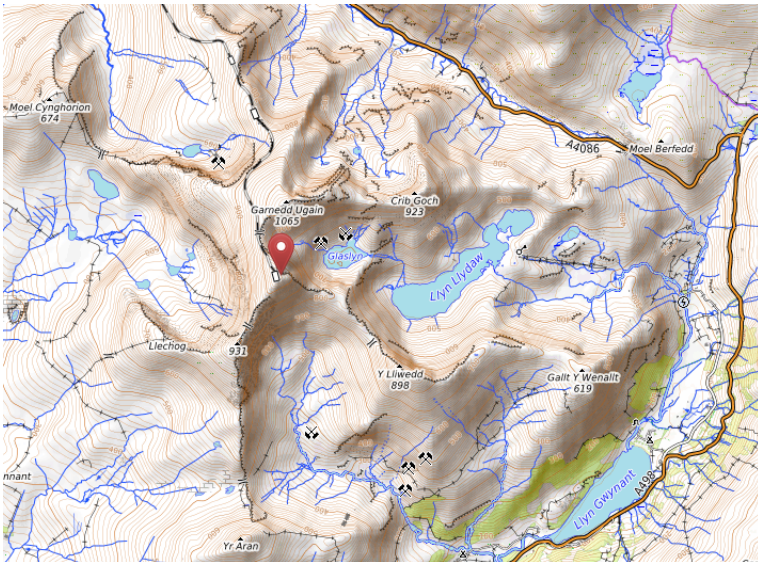


Snowdon – Mountain summits and surface water



The map to the left shows Snowdon and the surrounding area. Snowdon summit is marked with the 📍 symbol.

Label the map below with the names and heights of the following mountain summits:

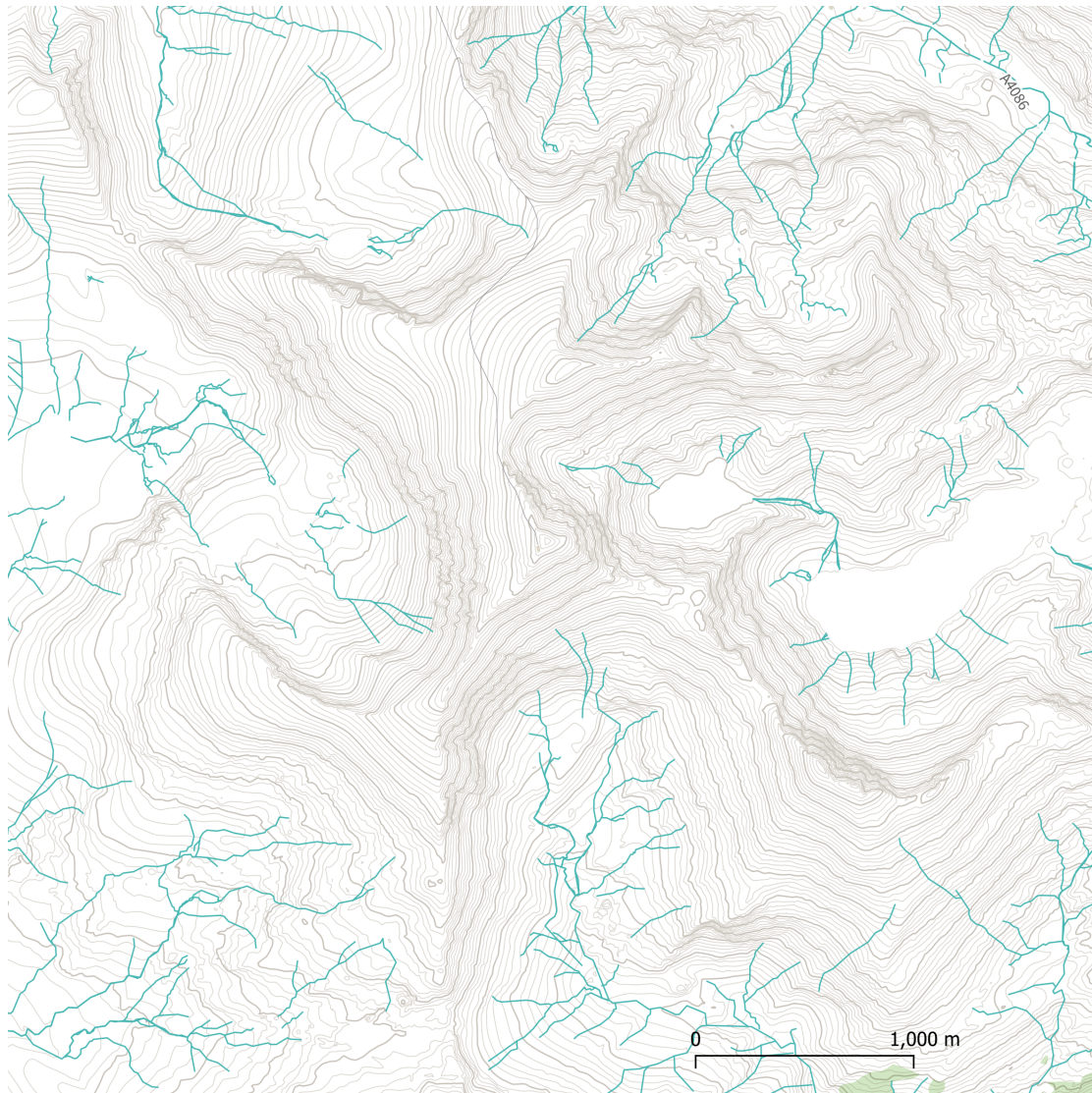
Snowdon / Yr Wyddfa – 1085m

Y Lliwedd – 898m

Garnedd Ugain (also known as Crib-Y-Ddysgl) - 1065m

Next, colour the missing areas of surface water in blue.

Map data: © OpenStreetMap-Mitwirkende, SRTM | Map display: © OpenTopoMap (CC-BY-SA)



Fun facts:

- *Crib-y-Ddysgl* means "ridge of the dish" in Welsh.
- The English name "Snowdon" comes from the Old English 'snaw dun', meaning 'snow hill'. The Welsh name 'Yr Wyddfa' means "the tumulus" or "the barrow".